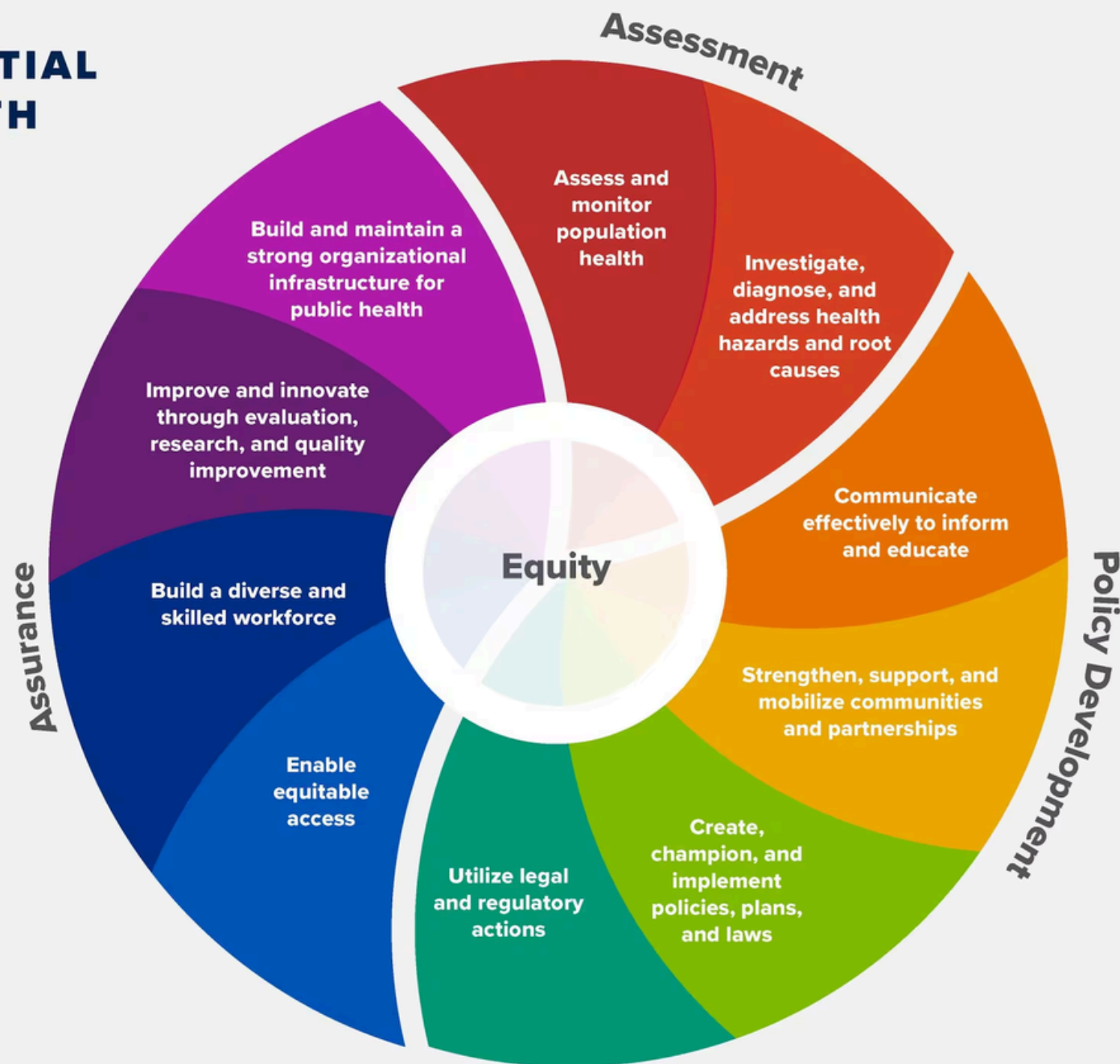


THE 10 ESSENTIAL PUBLIC HEALTH SERVICES

To protect and promote the health of all people in all communities

The 10 Essential Public Health Services provide a framework for public health to protect and promote the health of all people in all communities. To achieve optimal health for all, the Essential Public Health Services actively promote policies, systems, and services that enable good health and seek to remove obstacles and systemic and structural barriers, such as poverty, racism, gender discrimination, and other forms of oppression, that have resulted in health inequities. Everyone should have a fair and just opportunity to achieve good health and well-being.



Essential Public Health Services Activity: ASSESSMENT

Essential Public Health Service #1: Assess and monitor population health status factors that influence health, and community needs and assets

AGENCY	SERVICE
Enroll Wyoming	Assessments, focus groups
Mental Health and Recovery Services of Jackson Hole	Behavioral Health surveys from consumers, partners, and staff regarding MH and SUD trends/gaps and needs, Quantitative Data (demographics, diagnosis, services, T25 assessments, progress/efficacy data)
Hole Food Rescue	Assessment of community needs and assets
Habitat for Humanity	Data Collection of the types of families/community members we help
Victim Services	Local Needs Assessment

Essential Public Health Services Activity: ASSESSMENT

Essential Public Health Service #2: Investigate, diagnose, and address health problem and hazards affecting the population.

AGENCY	SERVICE
JH Fire and EMS	Interface and coordinate with partner entities when trends are identified, Emergency transport to higher level of care facilities, Referral of individual cases requiring attention, Emergency medical response
Mental Health and Recovery Services of Jackson Hole	Suicide prevention education/training, data tracking/trends, crisis and T25
Teton County Health Department	Environmental health assists in foodborne disease and outbreak
Enroll Wyoming	Educate consumers on insurance literacy , provide translation services when needed
Age Friendly Jackson Hole	See or are told problem or concern and we take it to the people who can help do something about it. E.g. Safety problem, ice streets, etc.
Teton County School District	Investigation of hazards, monitor outbreaks/enforce immunizations
Central Wyoming College-Jackson	Scientific and environmental research and training of students to research in water purity and other environmental issues

Essential Public Health Services Activity: POLICY DEVELOPMENT

Essential Public Health Service #3: Communicate effectively to inform and education people about health, factors that influence it, and how to improve it.

AGENCY	SERVICE
Hole Food Rescue	Communications and outreach
Habitat for Humanity	Provide homeowner education, translation for applications, and outreach to communities to inform of our services
Community Saftey Network	Health workplace /addressing and preventing sexual harassmtent education for local employers, Community education regarding our services and advocacy, Healthy relationships education for middle and high school students
Teton County Health Department	Website , media and communication, community health education
Jackson Hole Fire/EMS	Public awareness/education campaigns for community preparedness, Emergency and Non-Emergency notification and awareness messaging
Teton Literacy Center	Educating the parents of our families by providing ESL for free, year round, Free education for all of our families and students
Central Wyoming College-Jackson	Information to High school students about value of higher education, pathways to careers including education and healthcare. Exposure to personal healthcare (mental, physical, intrarelational) to all students through coursework-- introduction to community resources

Essential Public Health Services Activity: POLICY DEVELOPMENT

Essential Public Health Service #3: Communicate effectively to inform and education people about health, factors that influence it, and how to improve it.

AGENCY	SERVICE
Victim Services	Education and communication, risk communications
Enroll Wyoming	Assist consumers with marketplace health insurance plans, translation services
Mental Health and Recovery Services of Jackson Hole	Stigma reduction, suicide prevention training, Alcohol/SUD prevention education, Advocacy (cultural change), support groups
Teton County School District	Communication, Education, Translation
Age-Friendly Jackson Hole	Reach out through all communication channels to engage and inform our community of items of importance
Wyoming Immigrant Advocacy project	Community outreach about immigrant rights and legal updates
Teton Free Clinic	Health education with translation, health literacy

Essential Public Health Services Activity: POLICY DEVELOPMENT

Health Service #4: Strengthen support and mobilize communities and partnerships improve health

AGENCY	SERVICE
Victim Services	Community Engagement, Resource referral
Enroll Wyoming	Mini grant to undeserved populations (aging, vets, LGBTQ+, low income), Partnership building engagement promote health insurance literacy
Mental Health and Recovery Services of Jackson Hole	Participation in TBHealth Alliance, TC Systems of Care, TC Prevention Coalition, State Associations (WAMHSAC -Lobbying and system liaison w WyDOT)
Teton County Health Department	Clinical Services, Immunizations
Community Safety Network	Supporting survivors over time in their journey to long term safety
Wyoming Immigrant Advocacy project	Consultation with individuals and organizations who work with immigrant populations, Training of other pro bono attorneys on immigration issues to expand community capacity to meet immigrant needs

Essential Public Health Services Activity: POLICY DEVELOPMENT

Health Service #4: Strengthen support and mobilize communities and partnerships improve health

AGENCY	SERVICE
Hole Food Rescue	Community Engagement/mobilization, Mutual Aid partnership
Habitat for Humanity	By use of volunteers we are able to help the community grow in new skills and well being. Volunteering builds engagement, community, and purpose of self
Age Friendly Jackson Hole	Hold listening session and focus groups to learn from community members what topics/issues are important to raise and address
Teton Youth and Family Services	Coalition Building
Teton Literacy Center	Community empowerment and engagement to improve well being through free programs focused on community need, Community Partnerships to provide health literacy
Teton County Parks and Recreation	Community engagement through fun events and partnerships with community

Essential Public Health Services Activity: POLICY DEVELOPMENT

Health Service #5: Create, champion, and implement policies, plans and laws

AGENCY	SERVICE
Wyoming Immigrant Advocacy Project	Advocacy on community issues to ensure immigrant needs are considered and addressed
Community Safety Network	Partnership with Wy coalition, advocate for policy and law changes at the state level
Age Friendly Jackson Hole	Advocating for including/ensuring people of all ages, abilities, are at the table when decisions are being made
Teton Youth and Family Services	Policy development, lobbying
Mental Health and Recovery Services of Jackson Hole	Advocacy state and local; ToJ, TC, Wy DOH,

Essential Public Health Services Activity: POLICY DEVELOPMENT

Health Service #5: Utilize legal and regulatory actions designed to improve and protect the public's health

AGENCY	SERVICE
Community Safety Network	Advocacy and support for survivors in the criminal justice system
Teton County Health Department	E4 Restaurant inspections and Spa
Mental Health and Recovery Services of Jackson Hole	State BH licensing, CARF accreditation, WYDOH certification, National Council Mental Wellbeing,

Essential Public Health Services Activity: ASSURANCE

Health Service #7: Ensure and effective system that enables equitable access to the individual service and care needed to be healthy

AGENCY	SERVICE
Hole Food Rescue	Access to social services
Teton Literacy Center	Cultural Competency and a diverse staff that somewhat reflects the community
Community Safety Network	Bilingual and culturally sensitive support services for survivors of Domestic violence and sexual assault
Teton Free Clinic	Access to care, 200% FPL, DX and address health problems
Teton County Parks and Recreation	Access to care, translation services, space for all abilities, Access to care by providing fitness and wellness to everyone in the community, families, and individuals
Teton County School District	Access to care through referrals, in house counseling, in house nursing

Essential Public Health Services Activity: ASSURANCE

Health Service #7: Ensure and effective system that enables equitable access to the individual service and care needed to be healthy

AGENCY	SERVICE
Wyoming Immigrant Project	Free and low cost legal services for low income immigrants
Victim Services	Safety planning, access to care,
Age Friendly Jackson Hole	We advocate for access and inclusion for all ages and all abilities to the Town of Jackson and Teton County
Teton Youth and Family Services	Prevention Services, Crisis Services for Youth

Essential Public Health Services Activity: ASSURANCE

Health Service #8: Build and support a diverse and skilled public health workforce

AGENCY	SERVICE
Teton County Parks and Recreation	Workforce, equitable hiring, skills building, job training
Victim Services	Support victims of any crime
Mental Health and Recovery Services of Jackson Hole	Recovery support for employment with SUB, internal and external
Teton Literacy Center	Educating our youth through free programs, leadership development of our staff and families
Central Wyoming College	Student and intern practicums to support health care organizations (as part of coursework), Partnership with St. Johns Health for ESL and job training in entry level health care professions, Free ESL classes to public, free high school equiv. to public, Certification and degrees in health care (ex. Nursing, medical assist, etc.)
Habitat for Humanity	By building affordable housing, we are able to house the workforce community allowing them to grow in their job/education

Essential Public Health Services Activity: ASSURANCE

Health Service #9: Improve and innovate public health functions through ongoing evaluation, research and continuous improvement

AGENCY	SERVICE
Victim Services	Drink coasters for testing
Mental Health and Recovery Services	CARF; evaluation, best practice, quality review
Teton County Health Department	Continuous evaluation in departments
Teton Youth and Family Services	QI

Essential Public Health Services Activity: ASSURANCE

Health Service #10: Build and maintain a strong organizational infrastructure for public health

AGENCY	SERVICE
Enroll Wyoming	Educate how the marketplace insurance helps health care systems (spread the money to third party participants)
Teton Free Clinic	Equitable and organizational infrastructure (strategic resource location, fundraising/community)
Mental Health and Recovery Services of Jackson Hole	Organizational governance/accounting, financial sustainability, fundraising contracts,
Teton Youth and Family Services	Resource development
Community Safety Network	Crisis and long term housing for survivors
Teton County Health Department	Internal program and policies for workplace infrastructure