

Teton County Water Quality Advisory Board Update

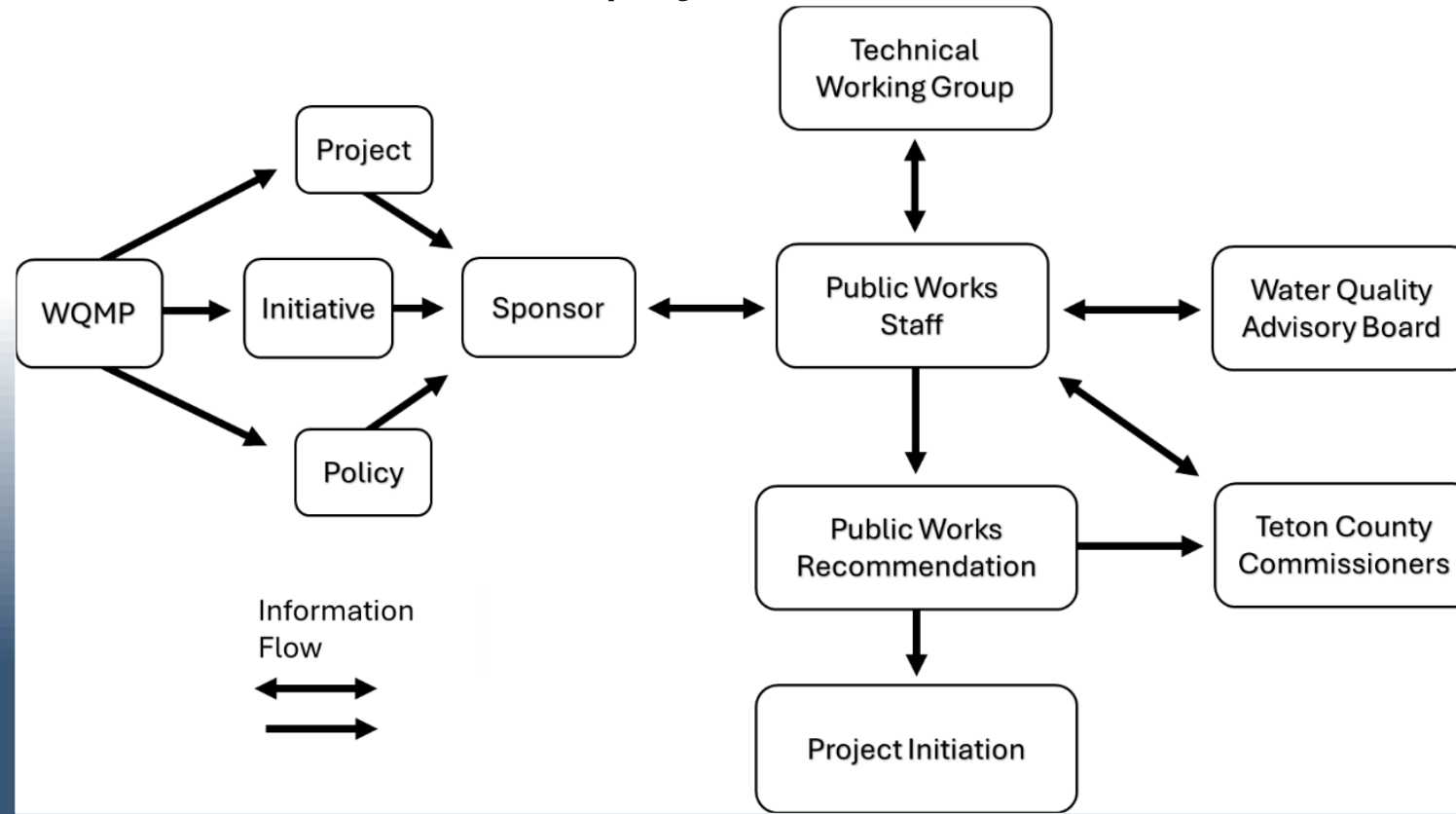
To provide a progress update on the activities of the WQAB and share recommendations, consider intervals for communication and funding requests, and discuss near-term priorities.

Teton County Public Works
Christopher Peltz – Water Resources Coordinator
John Martin – Vice Chair, Water Quality Advisory Board



What does this board do?

- The board assists Teton County staff with developing strategic priorities, informing and balancing financial trade-offs, and developing policy and programmatic tools to improve water quality throughout the county.
- Serves as a venue for discussing and evaluating projects, initiatives, and policies to provide recommendations to the BCC.
- WQAB recommendations seek to identify opportunities for cost savings, identify funding sources, and opportunities for coordination with other projects or initiatives.



Focus Areas

- **Big-picture, long-term goals: prioritizing human and natural resource health.**
- **Assist staff by evaluating proposals and providing recommendations.**
- **Assist staff with developing strategic priorities, informing and balancing financial trade-offs, and contributing to open and equitable recommendations for water quality project funding.**

2025 Priorities

- A vision and long-term water quality policy guidance.
- A criterion and process for water quality initiatives and projects.
- Recommendations for long-term goals and regulations.
- Recommendations for water quality cost-share.
- Other priorities as identified by the BCC

2025 Actions

- **Draft water quality policy recommendation.**
- **Small Wastewater Facility and LDR Regulations.**
- **Project and funding proposal review and recommendations.**
- **An evaluation process to review and recommend funding proposals.**
- **Alternative funding ideas.**
- **Public engagement and coordination.**

2026 Priorities

- Title 9 SWF regulatory updates
- Education/outreach strategy
- LDR amendments
- Alternative water quality financing tools