



# **Teton Science Schools**

*Connecting people, place, and nature through education.*



INDIAN SPRINGS RANCH

JACKSON HOLE, WYOMING



Teton Science Schools (TSS) - Jackson Campus  
Indian Springs Ranch Subdivision (ISR)

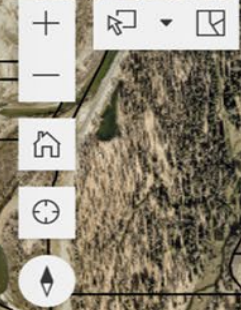
Wyoming Highway 22 (HWY-22) – Coyote Canyon Road & Indian Springs Drive – shared Intersection

*Five key issues:*

- Challenge and **safety of turning left** into and out of the TSS Jackson Campus and Indian Springs Ranch subdivision. A **known** risk for **24-years**.
- **Protecting** a large imperiled rare wetland fen.
- Opportunity to partner to maintain **pedestrian and bicycle access under HWY-22**. Current crossing through old cattle culvert to eventually be abandoned due to structural and dimensional issues.
- **Maintaining** and improving access to TSS's open space research and study lands south of HWY-22.
- Achieving Commissioners' request for WYDOT to pursue an **incremental approach** to the WY 22 Corridor Project – focusing on intersection improvements first.







TSS Jackson Campus

Total of 863 acres

North & South of WY HWY 22

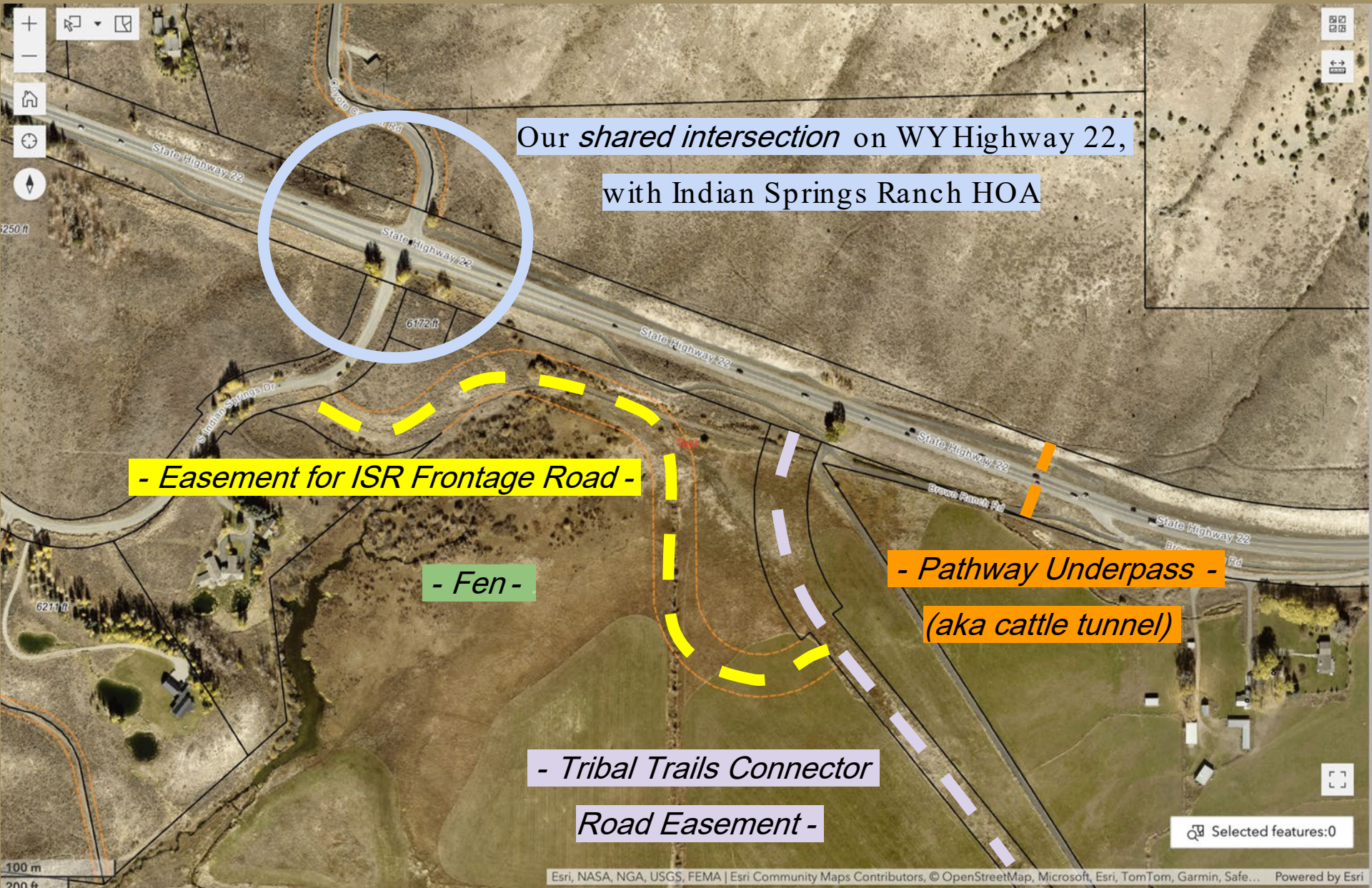
Boyle's Hill

0.4 km  
0.3 mi









Our *shared intersection* on WY Highway 22,  
with Indian Springs Ranch HOA

- Easement for ISR Frontage Road -

- Fen -

- Pathway Underpass -  
(aka cattle tunnel)

- Tribal Trails Connector  
Road Easement -

Selected features:0



At our WY Highway 22 intersection we have had collisions with students  
– **in TSS vehicles** – turning **left** onto the highway.



**-WETLAND ASSESSMENT-**  
**INDIAN SPRINGS RANCH HOA STUDY AREA**  
**LOTS 50, 53, AND 57 OF INDIAN SPRINGS RANCH**  
**TETON COUNTY, WYOMING**



Prepared For

**Indian Springs Ranch Homeowners Association**  
3385 Boyles Hill Road, Jackson, WY 83001

Prepared By



PO Box 8578, 140 E. Broadway, Suite 23, Jackson, Wyoming 83002

January 12, 2021

Copyright 2021, Biota Research and Consulting, Inc.



## Fens Are Rare

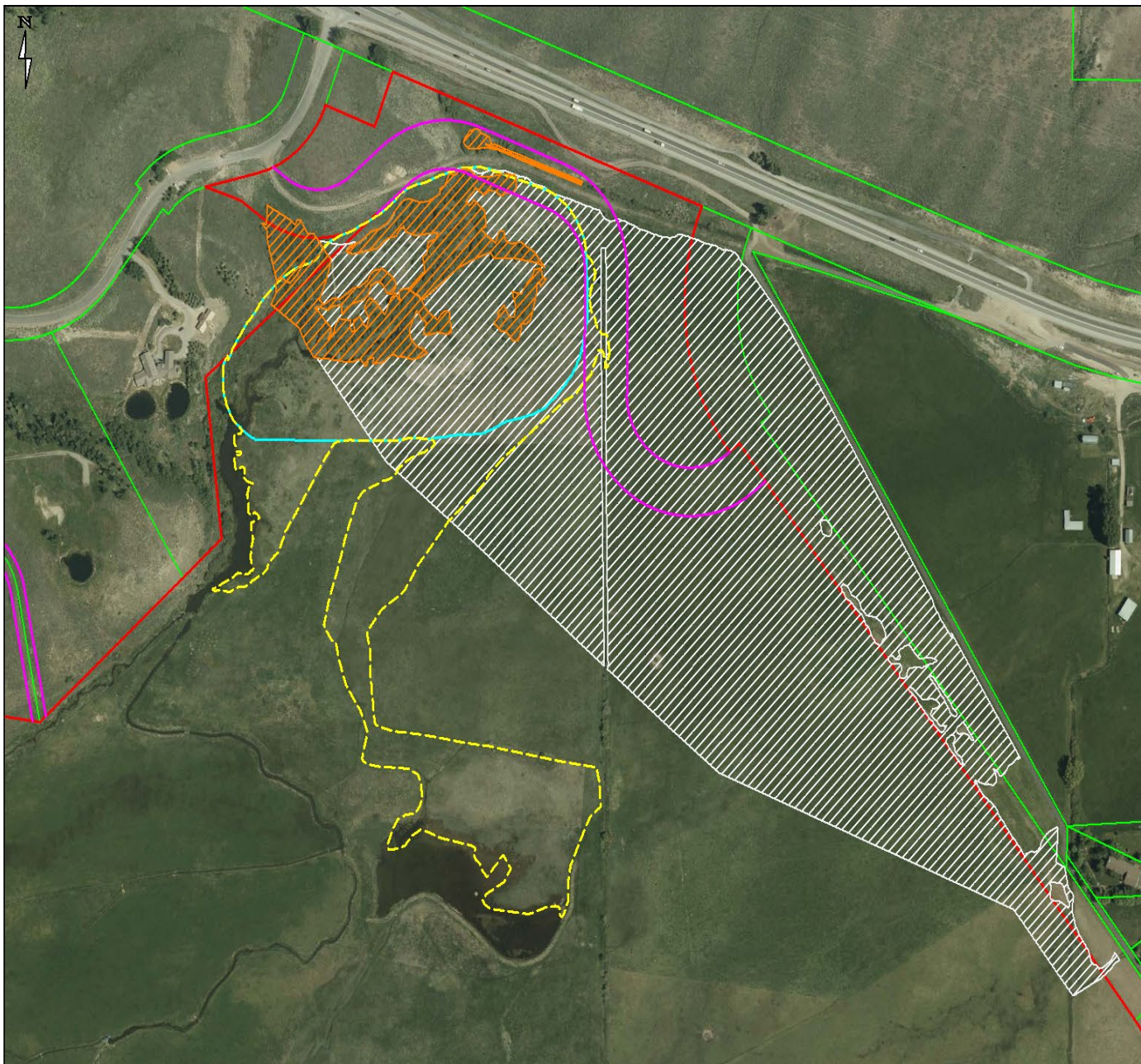
Represent less than **1% of wetlands**, and they take **thousands of years to form**.

A fen is a type of groundwater-fed, peat-forming wetland characterized by mineral-rich water, alkaline to neutral soils, and lush vegetation like sedges, grasses, and shrubs, acting as crucial carbon and water storage systems that support diverse, often rare, plants and animals.

Fens are **easily destroyed** :

Fens are very rare wetlands because they form under specific, stable conditions of cool groundwater, creating unique habitats for specialized, often endangered plants, but they are highly vulnerable to disruption from development, pollution, and water table changes, leading to rapid loss. Their slow peat formation and delicate water chemistry make them easily destroyed and difficult to restore, classifying them as globally threatened ecosystems.









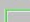


Wetland Analysis  
Tribal Trail Study Area  
Teton County, Wyoming

September 30, 2019

Approximate Scale: 1 inch = 75 feet  
2017 Aerial Imagery

Legend

-  Teton Science School, Inc. Parcel
-  Existing Easement
-  Emergent Wetland (MM Delineation)
-  Scrub-Shrub Wetland (MM Delineation)
-  Fen/Peatland (MM Delineation)
-  Biota's Preliminary Fen/Peatland Mapping
-  Platted Parcel

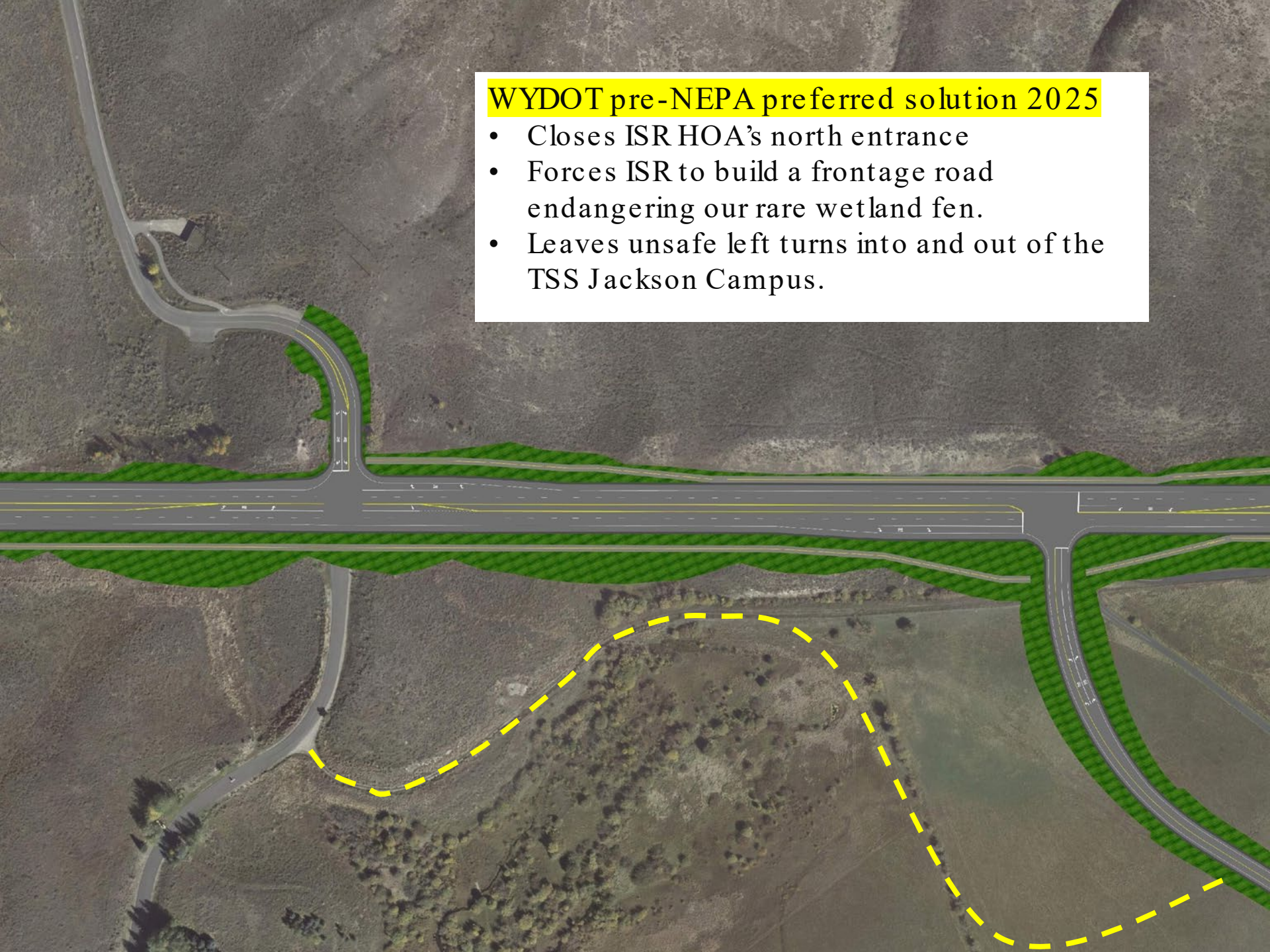


PO Box 8578, 140 E. Broadway, Suite 23, Jackson, WY 83002



## WYDOT pre-NEPA preferred solution 2025

- Closes ISR HOA's north entrance
- Forces ISR to build a frontage road endangering our rare wetland fen.
- Leaves unsafe left turns into and out of the TSS Jackson Campus.





## Eight Months of Outreach with:

- **Wyoming Department of Transportation (WYDOT)** – John Eddins P.E., Jeff Brown P.E., Bob Hammond P.E. and Darin Kaufman P.E.
- **WYDOT's WY 22 Corridor Project consultants** – Jacobs Engineering - Jim Clarke and Aaron Swafford
- **Indian Springs Ranch Homeowner Association (ISR HOA)** – Christine Watkins – HOA Board Chair, Ralph Haberfeld and Mike Halpin
  - *ISR HOA Board- 5*
- **Teton County staff** – Heather Overholser, Amy Ramage, P.E., Charlotte Frei, Ph.D., P.E. (*joint position with Town of Jackson*) , Brian Schilling and Chris Colligan.
- **Jackson Hole Land Trust (JHLT)** – Liz Long, Max Ludington and Kyle Kissock
  - *JHLT Stewardship Committee*
- **Wyoming Pathways (retired)** – Tim Young
- **Friends of Pathways** – Katherine Dowson, Sam Petri and Jim Rooks
- **Jackson Hole Conservation Alliance** – Jenny Fitzgerald and Catherine Hughes, Ph.D.
- **Teton Science Schools** – Rich Bloom, Wayne Turner, Doug Wachob, Ph.D., Tim Morris and Eleanor Dunning
  - *TSS Board of Directors - 12*



NOTE: THIS EXHIBIT IS INTENDED TO BE USED FOR CONCEPTUAL PLANNING DISCUSSIONS ONLY. LIMITED ENGINEERING RESEARCH AND ANALYSIS WAS IMPLEMENTED DURING DEVELOPMENT OF THIS EXHIBIT. FEASIBILITY OF THIS INTERCHANGE ALTERNATIVE WAS IN NO WAY CONFIRMED.

APPROXIMATE HWY 22 R-Q-W (TYP. EACH SIDE)

STOP BAR FOR ACCESS CONTROL DEVICE

EXISTING PATHWAY

EXISTING WALL

STOP BAR FOR ACCESS CONTROL DEVICE

REALIGNED APPROACH

TO INDIAN SPRINGS RANCH

STOP SIGN

PAVEMENT TO BE RECLAIMED

WATCH EXISTING ROAD GRADES

100' BIKE LANE

70'-0" RADIUS

70-FT RADIUS ROUNDABOUT

ROUNDABOUT REGULATORY SIGNAGE: "ROUNDABOUT" AND "YIELD", TYP.

100' BIKE LANE TO CONNECT TO EXISTING TSS PATHWAY

100' FT SINGLE-LANE UNDERPASS (16' WIDE BY 16' TALL INSIDE DIMENSIONS)

EXISTING APPROACHES TO REMAIN STRIPING TO REFLECT "RIGHT-IN RIGHT-OUT" TRAFFIC MOVEMENTS

LOTTE COUNTRY ROAD

HWY 22

WAYFINDING SIGN "INDIAN SPRINGS RANCH - TETON SCIENCE SCHOOL NEXT RIGHT"

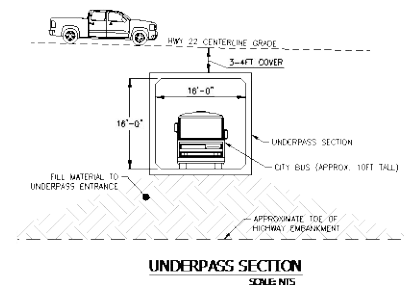
WAYFINDING SIGN "INDIAN SPRINGS RANCH - TETON SCIENCE SCHOOL NEXT RIGHT"

INDIAN SPRINGS RANCH SUBDIVISION

TETON SCIENCE SCHOOL PROPERTIES


UNDERPASS SECTION  
SCALE NIS

INTERCHANGE EXHIBIT  
SCALE: 1" = 100' (1:12,500)



**INTERCHANGE EXHIBIT**  
SCALE: 1" = 100' (11X17)



DRAWING NO. 138-755-047-01	JOB TITLE INDIAN SPRINGS RANCH 138-755 INTERCOMMERCE DESIGN TETON COUNTY, WY	DRAWING TITLE INDIAN SPRINGS RANCH/TETON SCIENCE SCHOOL INTERCHANGE ALTERNATIVE	<div>  </div> P.O. BOX 15669, JACKSON WYOMING 83071 733-2067 138-755-047-01	DATE 11-7-79	DESIGNED BY JAL	CHECKED BY JAL	DATE 11-7-79	REV
-------------------------------	---	---	---	-----------------	--------------------	-------------------	-----------------	-----

bioRxiv preprint doi: <https://doi.org/10.1101/2019.05.15.244862>; this version posted May 15, 2019. The copyright holder for this preprint (which was not certified by peer review) is the author/funder, who has granted bioRxiv a license to display the preprint in perpetuity. It is made available under aCC-BY-NC-ND 4.0 International license.



## Our Solution:

- **Protects** the fen by removing the frontage road need and vacating the 1994 Plat road easement note.
- **Eliminates** all left turn movements into and out of TSS and ISR entrances by building a 16'H by 16'W single lane box culvert tunnel under the highway.
- **Provides direct access** under Highway 22 to our open space study lands to the south.
- **Proposes a Partnership** with Teton County to design, fund and build a pedestrian box culvert tunnel adjacent to (or incorporated within) the vehicle tunnel – as part of the same project.

## Key Points:

- Vehicle tunnel project & short road connectors fully funded by TSS and ISR HOA.
- WYDOT has assured us we can design and build outside of the WY22 Corridor Project. Construction start goal of July 2027.
- TSS/ISR/WYDOT Cooperative Agreement in place.
- Partially achieves the requests of the Commissioners found in their July 1, 2025 comment letter to WYDOT.

Consensus with all parties: **TSS, ISR HOA, WYDOT/Jacobs, Jackson Hole Land Trust and Teton County staff.**

Support of the **Jackson Hole Conservation Alliance, Tim Young and Friends of Pathways .**



July 1, 2025 – BCC letter to Ms. Kelly Cope - WYDOT NEPA Supervisor  
Re: Comments on Wyoming-22 Level 1 and Level 2 pre-NEPA Screening

Excerpts:

*4. We propose, as an example, that the EIS evaluate an alternative in which the first phase may be to mitigate the safety deficiencies at the Coyote Canyon/Indian Springs Ranch/Skyline intersections. Following completion of this work, WYDOT and Teton County would evaluate the situation and consider a second phase with options.....*

*7. We encourage a detailed review and coordinated effort with County staff, Indian Springs Ranch HOA, and Teton Science Schools on how to best address the Indian Springs Drive and Coyote Canyon safety issues as they relate to a possible future Tribal Trail Road connection. There were other intersection design alternatives developed during the 2022 Tribal Trail project work that should not yet be dismissed prior to NEPA kick off. These attempted to incorporate safety improvements to the Coyote Canyon intersection.*











PORTLAND RIVER TRAIL



Historic aging cattle underpass converted to bike tunnel east of Coyote Canyon Road.

*Scheduled for removal.*





Recently built County pedestrian underpass

*(Adjacent to the Snake River bridge on HWY -22)*





## Opportunity for a partnership with Teton County to design a pedestrian box culvert adjacent to, or incorporated within, the vehicle tunnel:

- TSS and ISR HOA have secured a cooperative agreement with WYDOT for the vehicle tunnel.
- Existing pathway underpass is in bad shape - and undersized. It needs significant work and/or replacement.
- Access economy of scale reducing costs for both the vehicle and pedestrian tunnels.
- Reduces highway disruption by having both projects done at the same time.
- Meets the Commissioner's stated request for WYDOT to pursue an incremental approach to the WY22 Corridor project – focusing on intersection improvements first.
- Construction could be started July 2027 – funding dependent.

## Question for Board of County Commissioners:

- Is Teton County interested in partnering on this project to provide safe non-motorized connectivity under WY22 at the TSS-ISR intersection?
- Considerations
  - Cost for design and construction of non-motorized underpass and adjacent pathways is unknown at this time.
  - Funding source?
  - What is the future of the cattle tunnel?
  - This project is serving two private roads and private property, including a gated community that does not allow public bike/ped access (ISR). TSS is a private education non-profit that provides programming for the community, including a Pre-K through 5<sup>th</sup> grade school.



## Options:

- Option A: Do not move forward with partnering in the project and providing County resources for the pathway underpass
- Option B: Move ahead in partnership with TSS and ISR on design and obtain Engineer's Cost Estimate
  - Teton County would be required to approve a Co-Op Agreement with WYDOT.
  - Teton County and TSS would require an agreement for cost sharing and contract for design.
  - A funding source for the pathway design needs to be identified and budgeted for FY2027.

### Additional decision points related to Option B:

- A cost proposal for design of the multi-modal aspect of the project will be available through an RFP process, conducted by TSS, at which point the County could decide upon moving forward with design.
- An Engineer's Estimate of Probable Cost would be developed through the design process, at which point the County could decide upon moving forward with construction.